

Instructions

Contents



Power drill and hook not included

SlatWall MX Strip™
P/N: HSS196
HSS148

Installation Instructions

1. Fasten onto wall using slat wall channels for mounting
2. Pre-drill $5/32''$ holes into **SlatWall MX™ Strip** channels thru the aluminum channel inserts to locate panel onto structural wall components (ie wall studs) wherever possible. Screws must be installed thru the aluminum channel inserts to ensure optimum load capacity strength
3. Use as many wall studs as possible
4. Pre-drilled holes should be located every 12"-16"
5. Depending on the exact nature of your screws, countersinking all pre-drilled holes may be necessary so screw heads do not protrude into channel. Screw heads protruding into channel may inhibit movement of hooks.
6. Use a level to ensure level horizontal mounting
7. Using proper size fastener, screw panel into wall
8. Do not over tighten screws



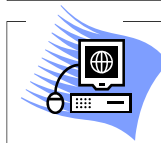
48" strip shown



96" strip shown

Any questions or problems, please contact us:

Gupta Permold Corporation
Consumer Goods Division
diamondLife™ Brand
234 Lott Road
Pittsburgh, PA 15235
USA
Ph. 412.793.3511 x103
Fx. 412.793.1055
Email. help@diamondlifegear.com
Store. diamondlifegear.com



Find hundreds of more great work space enhancement products at www.diamondlifegear.com

Doing a common thing uncommonly well, brings success.

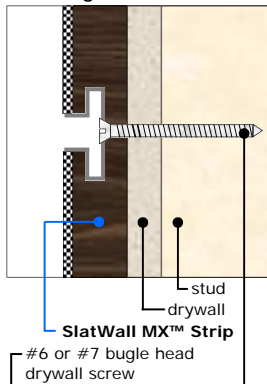
Welcome to the diamondLife.™



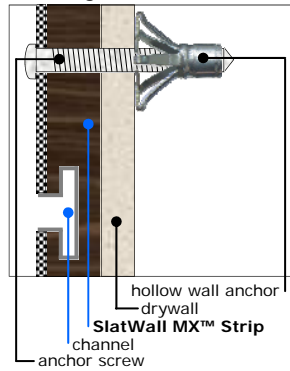
Helpful Hint!

Remove protective plastic film after installation

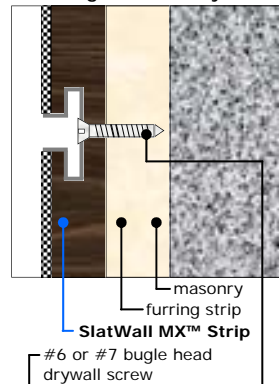
Fastening into wall stud



Fastening into hollow wall



Fastening into masonry wall



Accessories



Peg Hooks

Baskets

Bins



Organizers



Mounting Fasteners

CAUTION!

Keep heavy loads at least 3 inches away from either ends of SlatWall MX™ Strip. Hanging heavy loads close to the ends can cause the product to break. Also keep any heavy loads at least 6 inches apart.